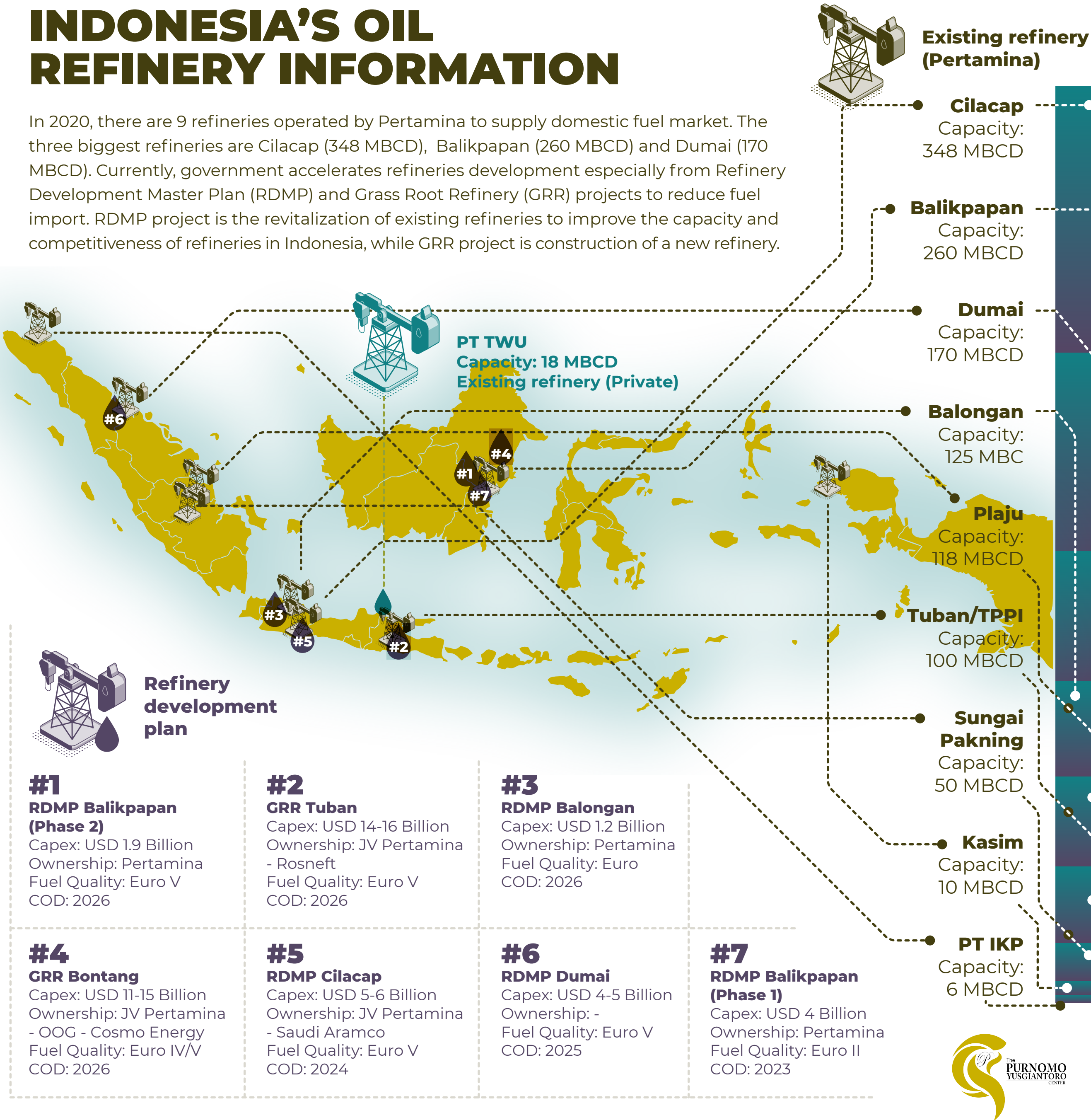


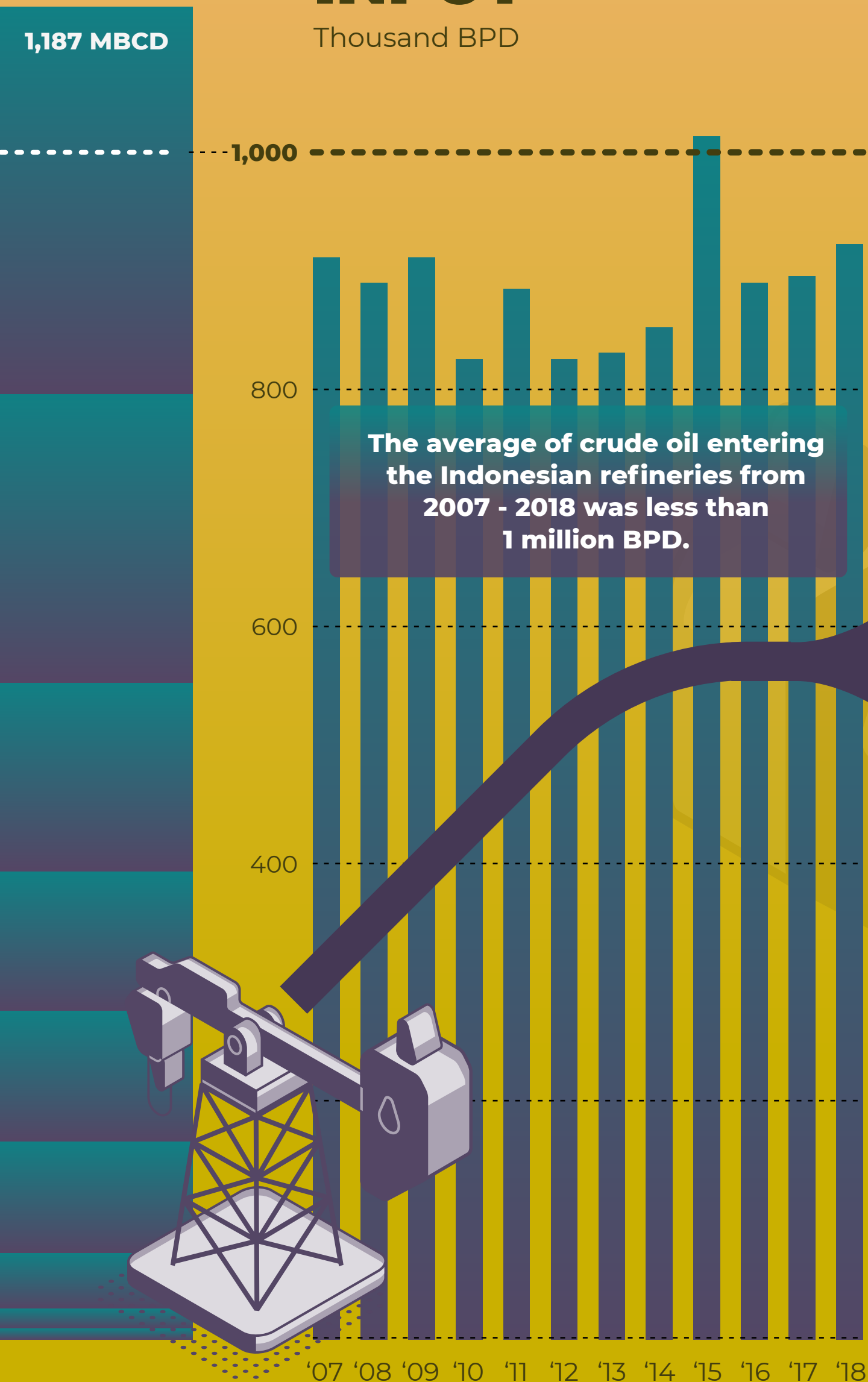
INDONESIA'S OIL REFINERY INFORMATION

In 2020, there are 9 refineries operated by Pertamina to supply domestic fuel market. The three biggest refineries are Cilacap (348 MBCD), Balikpapan (260 MBCD) and Dumai (170 MBCD). Currently, government accelerates refineries development especially from Refinery Development Master Plan (RDMP) and Grass Root Refinery (GRR) projects to reduce fuel import. RDMP project is the revitalization of existing refineries to improve the capacity and competitiveness of refineries in Indonesia, while GRR project is construction of a new refinery.



OIL REFINERIES INPUT

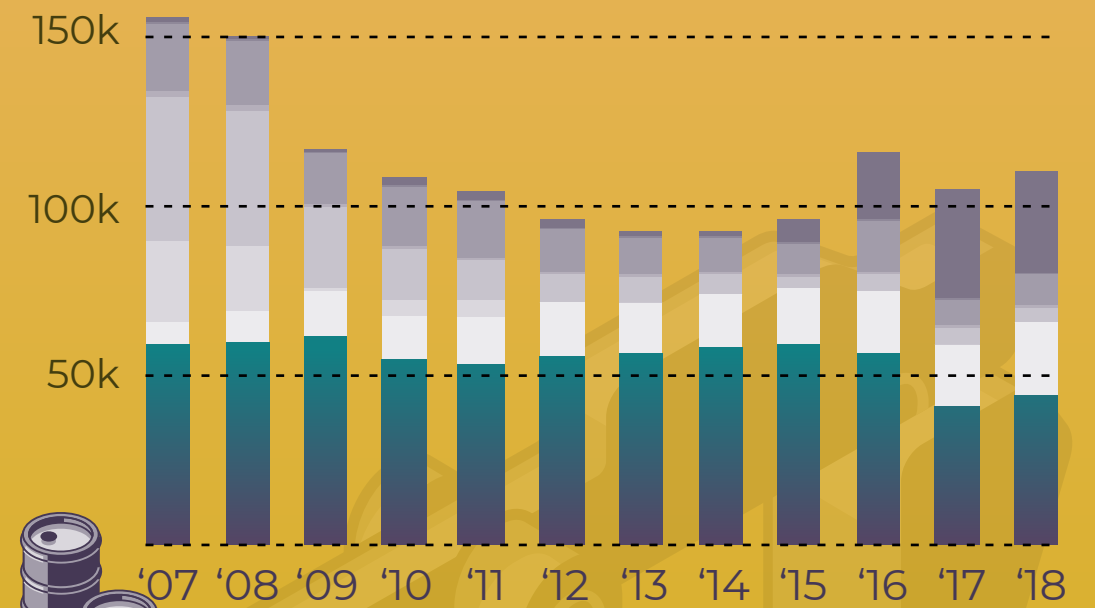
Thousand BPD



OIL REFINERIES OUTPUT

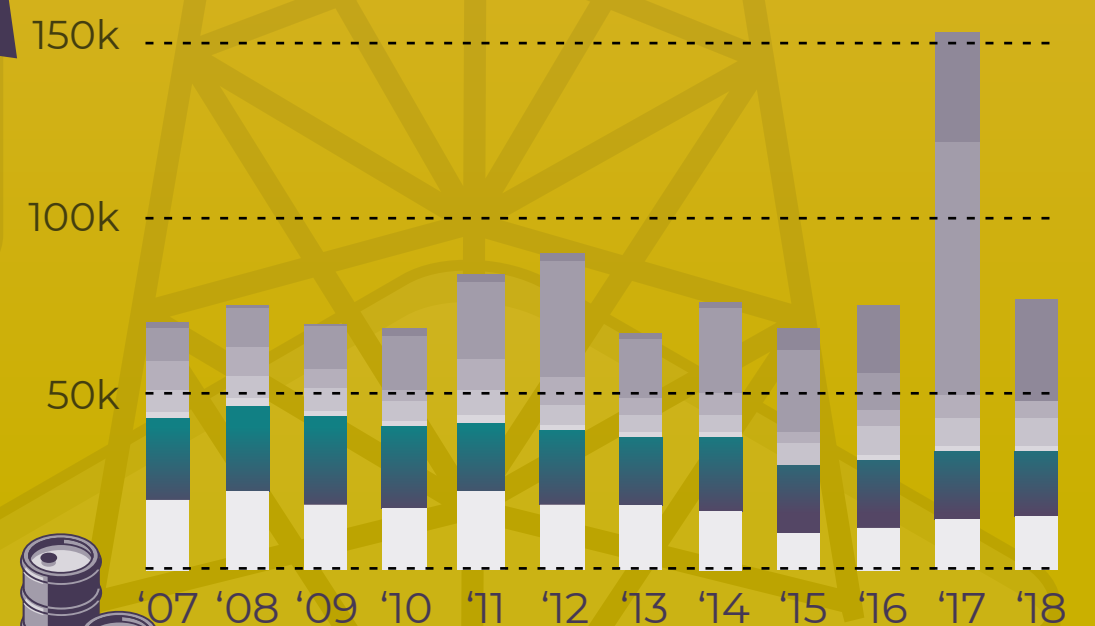
Thousand Barrels

PRIMARY FUEL



On primary fuel production, Ron-88 (subsidized fuel) still dominates refinery production in Indonesia.

SECONDARY FUEL

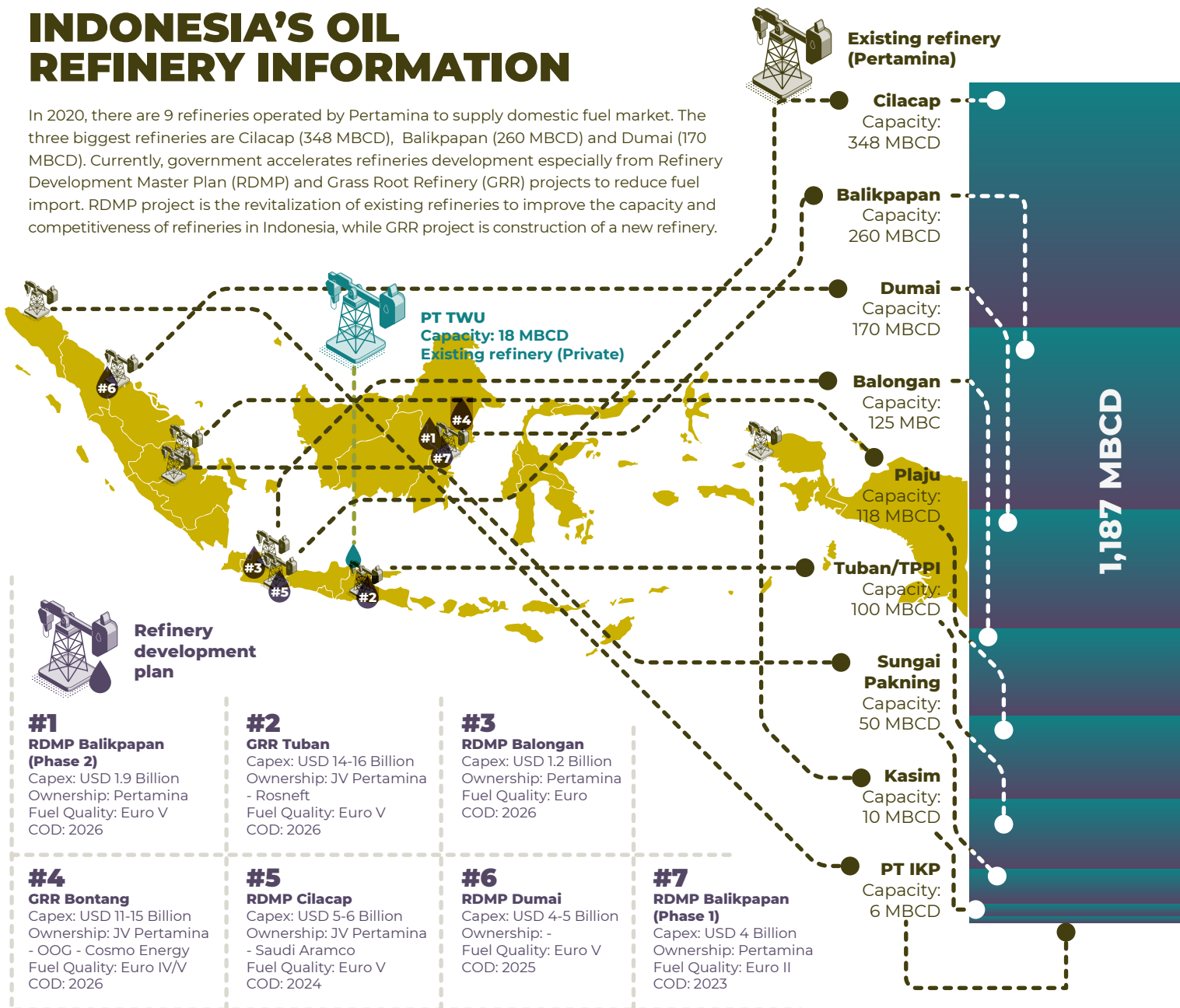


Low Sulphur Waxy Residue (LSWR) is a type of fuel widely produced on secondary fuel production.

All data can be accessed through the PYC Data Center website (www.datacenter-pyc.org).

INDONESIA'S OIL REFINERY INFORMATION

In 2020, there are 9 refineries operated by Pertamina to supply domestic fuel market. The three biggest refineries are Cilacap (348 MB CD), Balikpapan (260 MB CD) and Dumai (170 MB CD). Currently, government accelerates refineries development especially from Refinery Development Master Plan (RDMP) and Grass Root Refinery (GRR) projects to reduce fuel import. RDMP project is the revitalization of existing refineries to improve the capacity and competitiveness of refineries in Indonesia, while GRR project is construction of a new refinery.



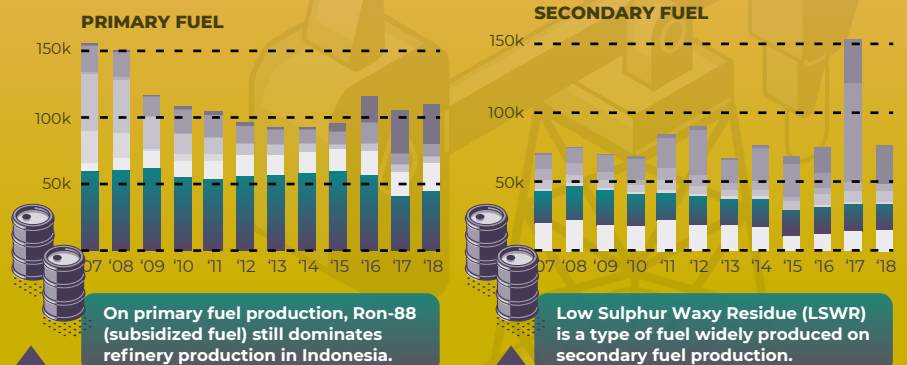
OIL REFINERIES INPUT

Thousand BPD



OIL REFINERIES OUTPUT

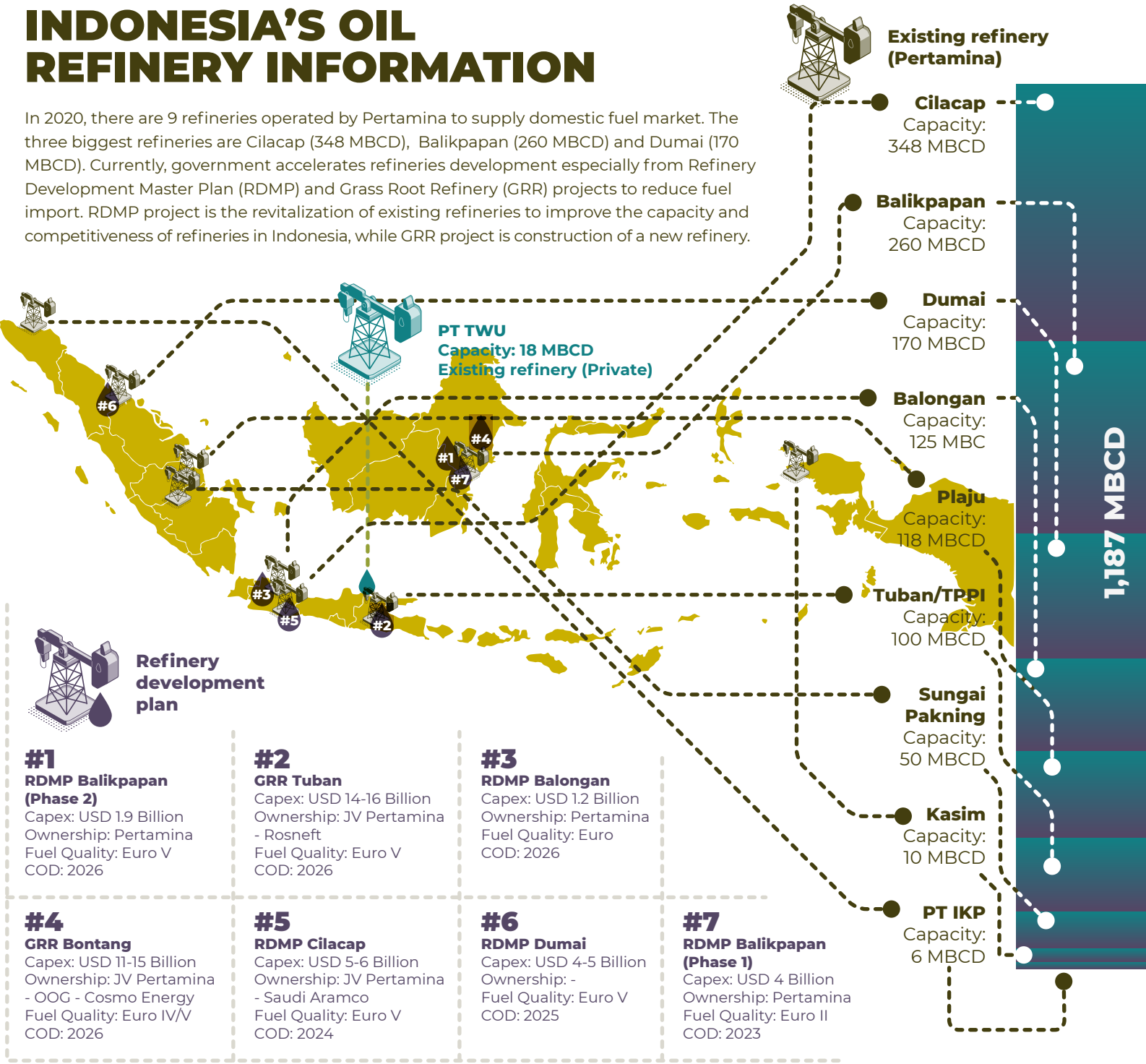
Thousand Barrels



All data can be accessed through the PYC Data Center website (www.datacenter-pyc.org).

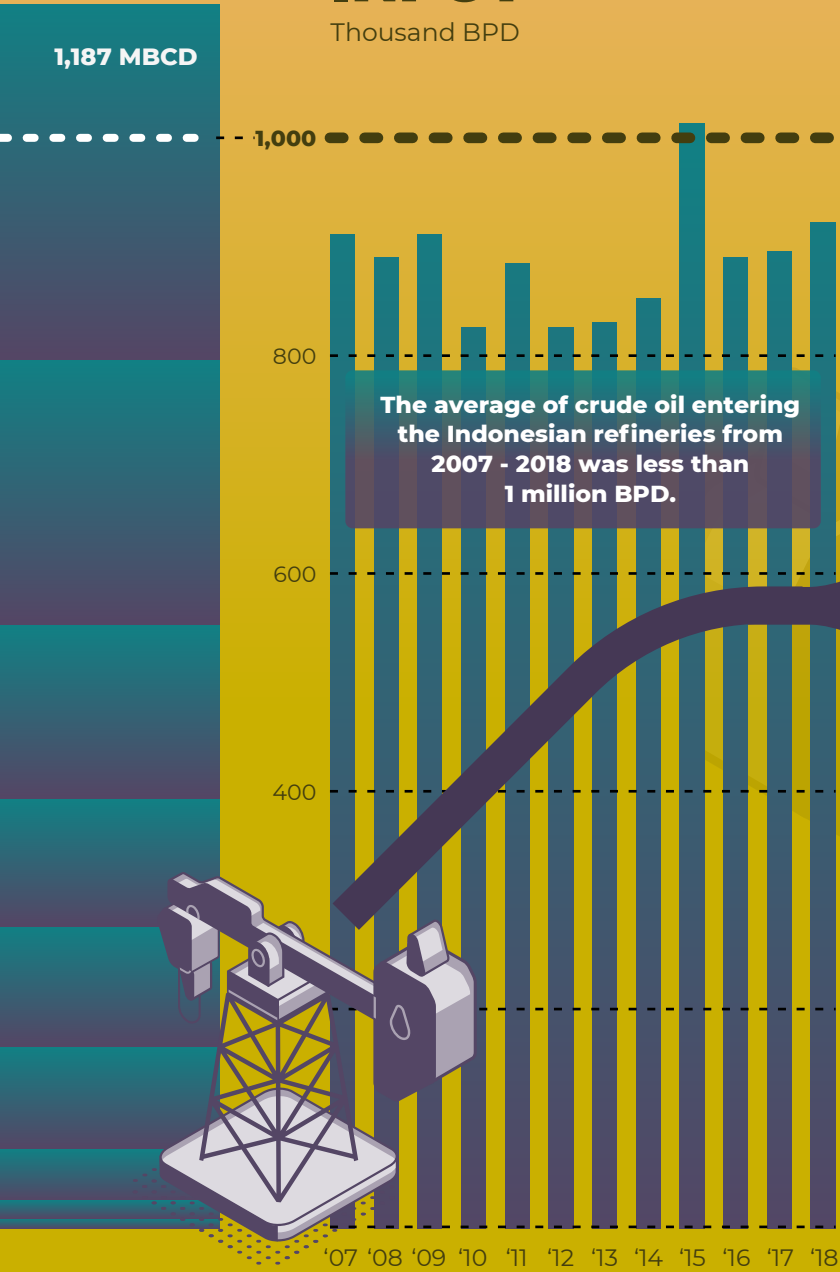
INDONESIA'S OIL REFINERY INFORMATION

In 2020, there are 9 refineries operated by Pertamina to supply domestic fuel market. The three biggest refineries are Cilacap (348 MBCD), Balikpapan (260 MBCD) and Dumai (170 MBCD). Currently, government accelerates refineries development especially from Refinery Development Master Plan (RDMP) and Grass Root Refinery (GRR) projects to reduce fuel import. RDMP project is the revitalization of existing refineries to improve the capacity and competitiveness of refineries in Indonesia, while GRR project is construction of a new refinery.



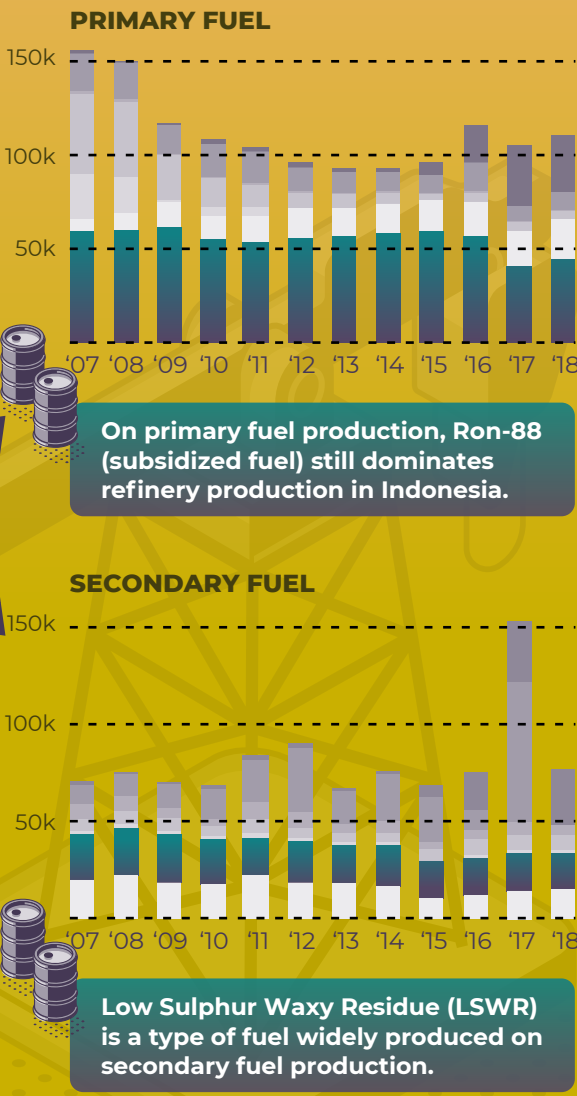
OIL REFINERIES INPUT

Thousand BPD



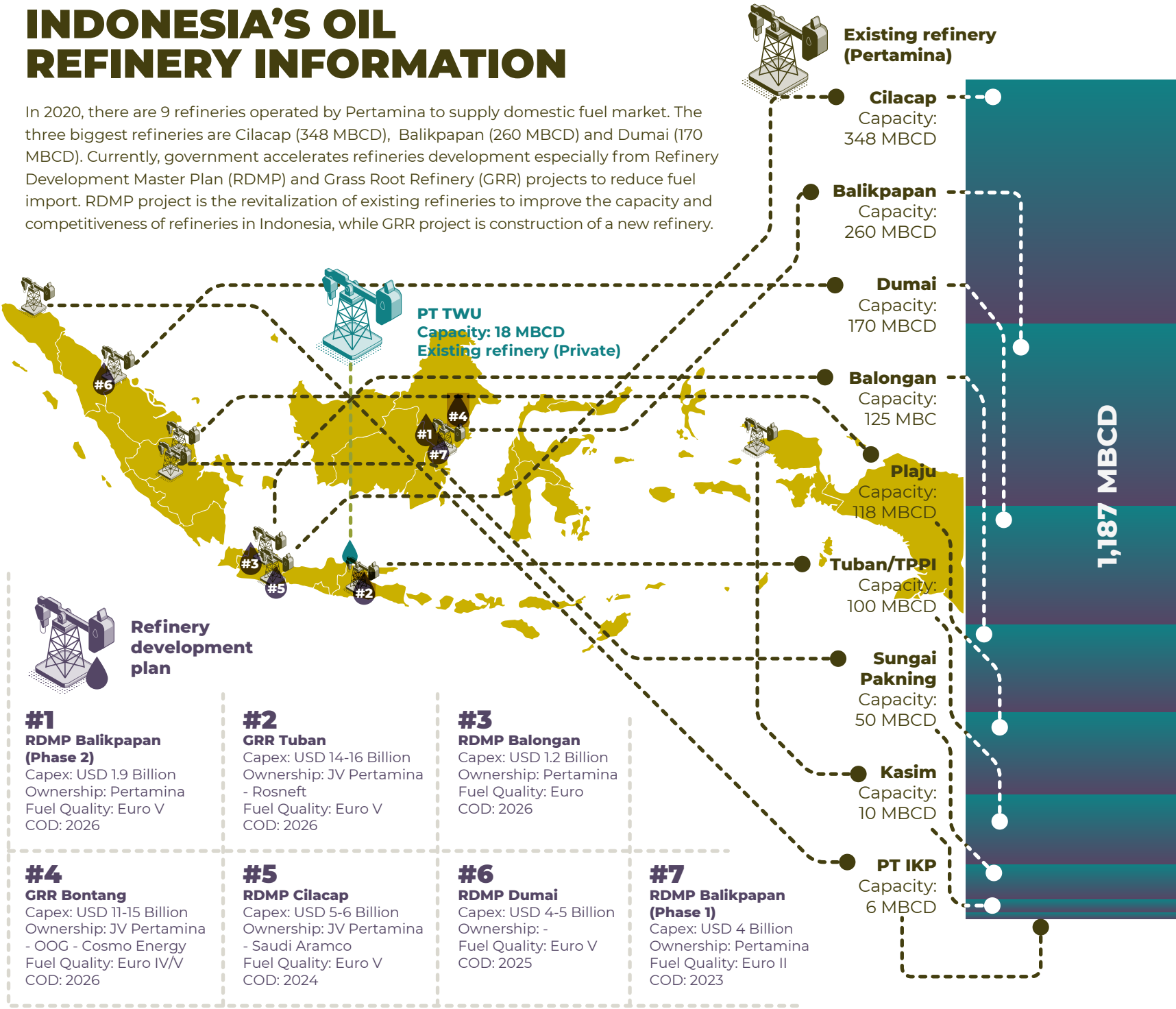
OIL REFINERIES OUTPUT

Thousand Barrels



INDONESIA'S OIL REFINERY INFORMATION

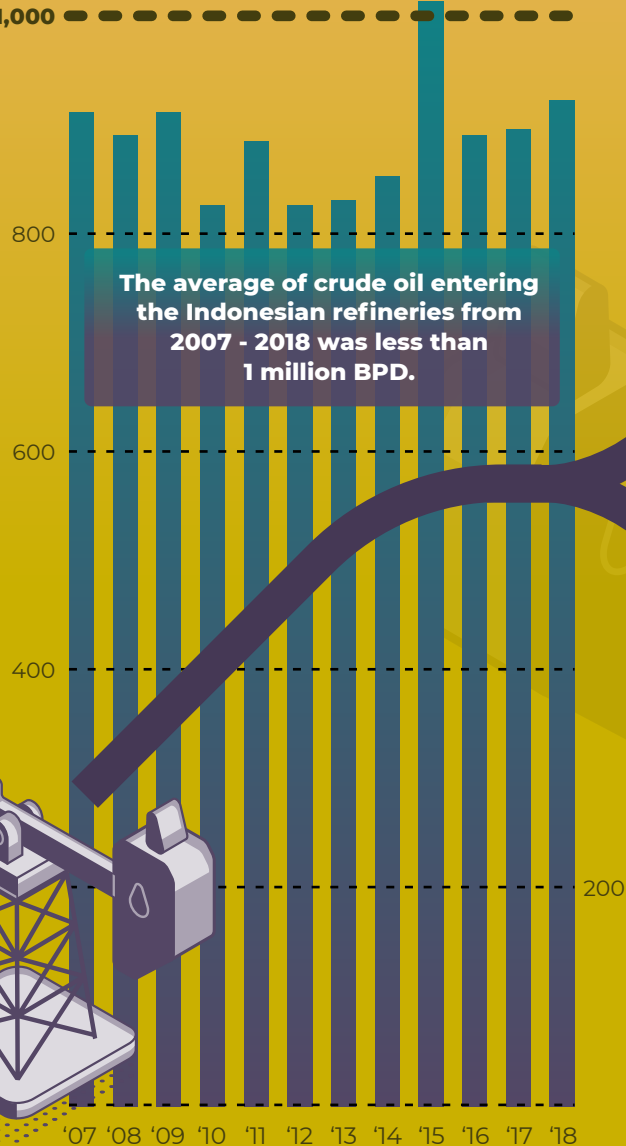
In 2020, there are 9 refineries operated by Pertamina to supply domestic fuel market. The three biggest refineries are Cilacap (348 MBCD), Balikpapan (260 MBCD) and Dumai (170 MBCD). Currently, government accelerates refineries development especially from Refinery Development Master Plan (RDMP) and Grass Root Refinery (GRR) projects to reduce fuel import. RDMP project is the revitalization of existing refineries to improve the capacity and competitiveness of refineries in Indonesia, while GRR project is construction of a new refinery.



OIL REFINERIES INPUT

Thousand BPD

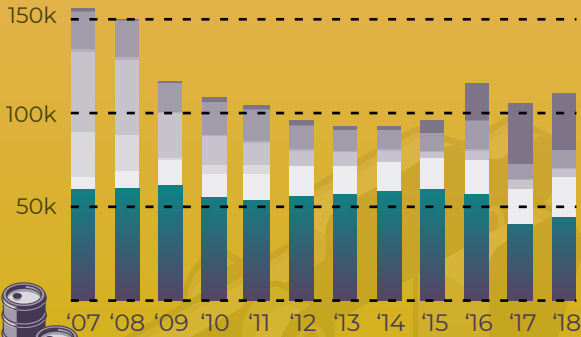
1,187 MBCD



OIL REFINERIES OUTPUT

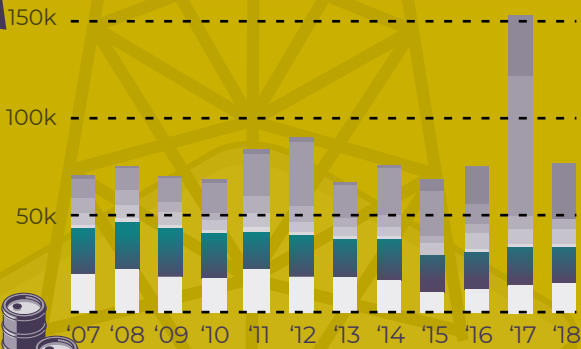
Thousand Barrels

PRIMARY FUEL



On primary fuel production, Ron-88 (subsidized fuel) still dominates refinery production in Indonesia.

SECONDARY FUEL



Low Sulphur Waxy Residue (LSWR) is a type of fuel widely produced on secondary fuel production.